



ALL WINCHES INCLUDE A UNIVERSAL MOUNTING BRACKET, HARDWARE, HANDLEBAR SWITCH, AND ELECTRICAL CONNECTIONS AS FEATURED BELOW



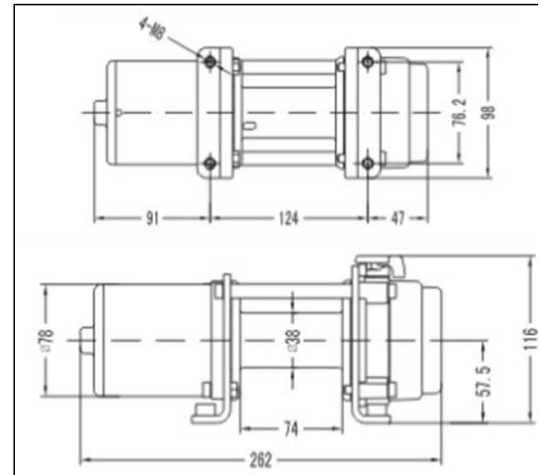
AC-12021 SERIES
AC-12022 SERIES



AC-12021
AC-12022
WIRED TYPE



AC-12021-1
AC-12022-1
WIRELESS TYPE



SPECIFICATIONS

RATED LINE PULL	1,500 LBS. (680KGS.) SINGLE-LINE
MOTOR	1.0HP
DIMENSIONS (L X W X H)	262 X 96 X 116 MM
GEARING	DIFFERENTIAL PLANETARY
ROPE (in X ft) (mm X m)	AC-12021 SERIES: STEEL WIRE, 4/25" X 25' (4 MM X 7.6 M) AC-12022 SERIES: SYNTHETIC ROPE, 7/36" X 25' (5 MM X 7.6 M)
GEAR RATIO	153 : 1
NW / GW	14KG/16KG(2PC)
MEAS	34.5 X 24.5 X 35 CM (2PC)



ALL WINCHES INCLUDE A UNIVERSAL MOUNTING BRACKET, HARDWARE, HANDLEBAR SWITCH, AND ELECTRICAL CONNECTIONS AS FEATURED BELOW



AC-12015 SERIES



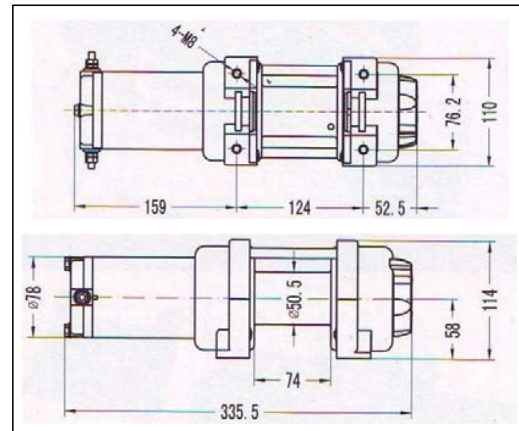
AC-12018 SERIES



AC-12015
AC-12015-1
WIRED TYPE



AC-12018
AC-12018-1
WIRELESS TYPE



SPECIFICATIONS

RATED LINE PULL	2,500 LBS. (1,134KGS.) SINGLE-LINE
MOTOR	FULLY SEALED 12V DC, 0.9HP (700W) PERMANENT MAGNET
CONTROLS	HANDLEBAR MOUNTED MINI-ROCKER SWITCH
GEARING	3-STAGE PLANETARY
CLUTCH	FREESPOOLING; CAM ACTIVATED
BRAKE	AUTOMATIC
DRUM DIAMETER/ LENGTH	20" /2,9"
ROPE (in X ft) (mm X m)	AC-12015 SERIES: STEEL WIRE, 3/16" X 50' (4.8MM X 15.2M) AC-12018 SERIES: SYNTHETIC ROPE, 3/16" X 33' (4.8MM X 10M)
FAIRLEAD	HEAVY DUTY 4-WAY ROLLER
GEAR RATIO	136 : 1
HOOK	HEAVY DUTY, CLEVIS PINNED LATCH

PERFORMANCE DATA

LAYER	RATED LINE PULL LBS (KGS)	TOTAL ROPE ON DRUM FT (M)
1	2,500 (1,134)	8.85 (2.7)
2	2,134 (968)	19.22 (5.86)
3	1,861 (844)	31.11 (9.48)
4	1,650 (748)	44.52 (13.58)
5	1,483 (673)	50.00 (15.2)

PERFORMANCE DATA

LINE PULL LBS (KGS)	LINE SPEED	MOTOR (DRAW)
0	27ft (8.3m)	15 AMPS
1,000 (454)	20ft (6.1m)	60 AMPS
1,500 (680)	14ft (4.3m)	100 AMPS
2,000 (907)	10ft (3m)	130 AMPS
2,500 (1134)	7ft (2.1m)	160 AMPS



ALL WINCHES INCLUDE A UNIVERSAL MOUNTING BRACKET, HARDWARE, HANDLEBAR SWITCH, AND ELECTRICAL CONNECTIONS AS FEATURED BELOW



AC-12016
AC-12019
WIRED TYPE



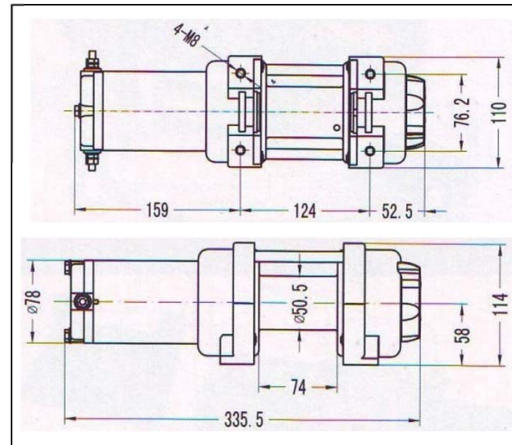
AC-12016-1
AC-12019-1
WIRELESS TYPE



AC-12016 SERIES



AC-12019 SERIES



SPECIFICATIONS

RATED LINE PULL	3,000 LBS. (1,360KGS.) SINGLE-LINE
MOTOR	12V DC, 1.0HP (770W) PERMANENT MAGNET
CONTROLS	HANDLEBAR MOUNTED MINI-ROCKER SWITCH
GEARING	3-STAGE PLANETARY
CLUTCH (FREESPOOLING)	CAM ACTIVATED
BRAKE	MECHANICAL BRAKE
DRUM DIAMETER/ LENGTH	20" /2,9"
ROPE (in X ft) (mm X m)	AC-12016 SERIES: STEEL WIRE, 3/16" X 50' (4.8MM X 15.2M) AC-12019 SERIES: SYNTHETIC ROPE, 3/14" X 33' (5.5MM X 10M)
FAIRLEAD	ROLLER
GEAR RATIO	136 : 1
RECOMMENDED BATTERY	12 AMP/HOUR MINIMUM FOR WINCHING

PERFORMANCE DATA

LAYER	RATED LINE PULL LBS (KGS)	TOTAL ROPE ON DRUM FT (M)
1	3,000 (1361)	8.85 (2.7)
2	2,561 (1162)	19.22 (5.86)
3	2,234 (1013)	31.11 (9.48)
4	1,981 (899)	44.52 (13.58)

PERFORMANCE DATA

LINE PULL LBS (KGS)	LINE SPEED	MOTOR (DRAW)
0	27ft (8.3m)	15 AMPS
500 (227)	20ft (6.1m)	40 AMPS
1,000 (454)	14ft (4.3m)	60 AMPS
2,000 (907)	9ft (2.7m)	130 AMPS



ALL WINCHES INCLUDE A UNIVERSAL MOUNTING BRACKET, HARDWARE, HANDLEBAR SWITCH, AND ELECTRICAL CONNECTIONS AS FEATURED BELOW



AC-12017 SERIES



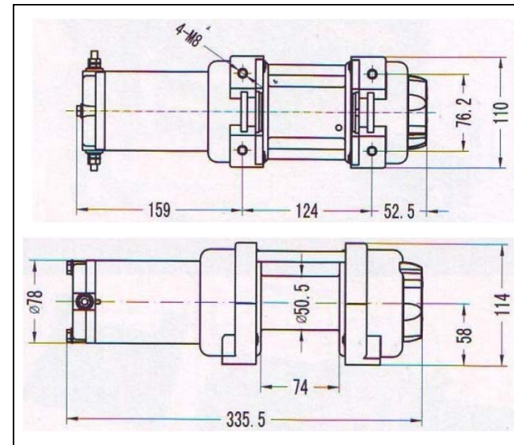
AC-12020 SERIES



AC-12017
AC-12020
WIRED TYPE



AC-12017-1
AC-12020-1
WIRELESS TYPE



SPECIFICATIONS

RATED LINE PULL	3,500 LBS. (1,581KGS.) SINGLE-LINE
MOTOR	12V DC, 1.1HP (825W) PERMANENT MAGNET
CONTROLS	HANDLEBAR MOUNTED MINI-ROCKER SWITCH
GEARING	3-STAGE PLANETARY
CLUTCH (FREESPOOLING)	CAM ACTIVATED
BRAKE	DYNAMIC MECHANICAL BRAKE IS AVAILABLE
DRUM DIAMETER/ LENGTH	20" /2,9"
ROPE (in X ft) (mm X m)	AC-12017 SERIES: STEEL WIRE, 3/14" X 50' (5.5MM X 15.2M) AC-12020 SERIES: SYNTHETIC ROPE, 3/14" X 33' (5.5MM X 10M)
FAIRLEAD	ROLLER
GEAR RATIO	136 : 1
RECOMMENDED BATTERY	12 AMP/HOUR MINIMUM FOR WINCHING

PERFORMANCE DATA

LAYER	RATED LINE PULL LBS (KGS)	TOTAL ROPE ON DRUM FT (M)
1	3,500 (1,581)	8.85 (2.7)
2	2,561 (1,162)	19.22 (5.86)
3	2,234 (1,013)	31.11 (9.48)
4	1,981 (899)	44.52 (13.58)

PERFORMANCE DATA

LINE PULL LBS (KGS)	LINE SPEED	MOTOR (DRAW)
0	27ft (8.3m)	15 AMPS
500 (227)	20ft (6.1m)	40 AMPS
1,000 (454)	16ft (4.9m)	60 AMPS
2,500 (1134)	7ft (2.1m)	160 AMPS

BRONCO

ATV COMPONENTS



AC-12025

DESC.: WINCH 3500LBS - WIRELESS, BLACK EDITION
SPEC.: 1WATERPROOF, ENDCAP ALU.

BLACK ANODIZED,
NEW REMOTE, BLACK,
W/WINCH BUMPER,
WIRELESS TYPE,
W/ HOOK BLACK ANODIZED,
STRONGER SYNTHETIC
GRAY ROPE O.D 5.5MM,
LENGTH 10.3M,

MATERIAL: STEEL
FINISH: BLACK COATING



BLACK EDITION

WINCHES PARTS



AC-12025A

BLACK FAIRLEAD ROLLER
FOR AC-12025 . WIRE TYPE.
MATERIAL: STEEL



AC-12025B

WIRELESS REMOTE SWITCH
W/ BATTERY X 1PC,
REMOTE CONTROL X 1PC,
SOLENOID X 1PC.
WIRELESS TYPE FOR AC-12025.
MATERIAL : PLASTIC



ALL WINCHES INCLUDE A UNIVERSAL MOUNTING BRACKET, HARDWARE, HANDLEBAR SWITCH, AND ELECTRICAL CONNECTIONS AS FEATURED BELOW



AC-12107 SERIES



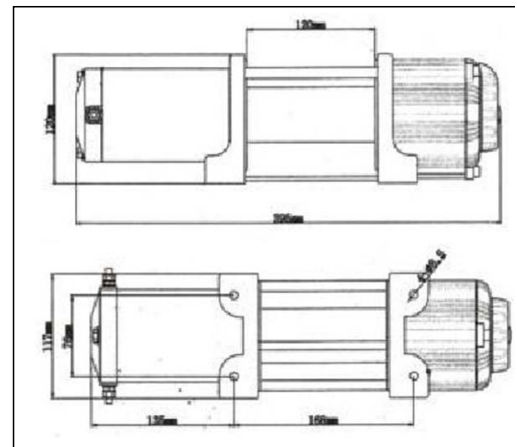
AC-12108 SERIES



AC-12107
AC-12108
WIRED TYPE



AC-12107-1
AC-12108-1
WIRELESS TYPE



SPECIFICATIONS

RATED LINE PULL	4,500 LBS. (2,045KGS.) SINGLE-LINE
MOTOR	12V DC, 1.3HP PERMANENT MAGNET
BRAKE	MECHANICAL BRAKE
DRUM LENGTH	120MM
ROPE (in X ft) (mm X m)	AC-12107 SERIES: STEEL WIRE, 3/14" X 50' (5.5MM X 15.2M) AC-12108 SERIES: SYNTHETIC ROPE, 3/14" X 33' (5.5MM X 15.5M)
FAIRLEAD	ROLLER
GEAR RATIO	166 : 1
OVERALL DIMENSIONS (LXWXH)	395X117X120MM

PERFORMANCE DATA

LAYER	RATED LINE PULL LBS (KGS)	TOTAL ROPE ON DRUM FT (M)
1	4,500 (2,045)	8.85 (2.7)
2	3,600 (1,636)	19.22 (5.86)
3	3,130 (1,423)	31.11 (9.48)
4	2,745 (1,248)	44.52 (13.58)

PERFORMANCE DATA

LINE PULL LBS (KGS)	LINE SPEED	MOTOR (DRAW)
0	20.5ft (6.2m)	30 AMPS
1,000 (454)	16.1ft (4.9m)	83 AMPS
2,000 (909)	12.8ft (3.9m)	136 AMPS
3,000 (1,363)	10.7ft (3.3m)	168 AMPS
4,000 (1,814)	8.6ft (2.6m)	232 AMPS
4,500 (2,045)	8.6ft (2.6m)	278 AMPS

SOLENOIDS



AC-12042

AC-12113

SPEC.

4 BOLT DESIGN, WIRE TYPE, MATERIAL: PLASTIC, FINISH: BLACK

WIRELESS REMOTE SWITCH



AC-12043

AC-12043-1
ONE PLUG TYPE CONNECTOR.

SPEC.

W/ BATTERYX1PC, ROMOTE CONTROLX1PC
WIRELESS TYPE, MATERIAL: PLASTIC

WINCH SWITCH



AC-12001E

MINI ROCKER SWITCH

AC-12114
WINCH SWITCH

NI#

SPEC.

AC-12001E LENGTH 3.05M W/ SWITCH, MATERIAL: PLASTIC
AC-12114 SWITCH X 1PC, SWITCH HARDWARE X 1SET.



AC-12045
HAND HELD REMOTE SWITCH
FINISH: BLACK

AC-12045-1
HAND HELD REMOTE SWITCH
MATERIAL: PLASTIC+RUBBER
FINISH: BLACK

NI#

SPEC.

AC-12045 FOR ATV WINCH, MATERIAL: POLYEASTER 300D
AC-12045-1 FOR ATV WINCH, W/ NEW CONNECTOR,

WINCH QUICK CONNECTOR



AC-12250 /-1 /-2

W/2PC CABLE, 2PCS BOOT, 2PC CONNECTOR.
2PC CONNECTOR CAP.

NI#

CABLE LENGTH

CABLE O.D.

NI#	CABLE LENGTH	CABLE O.D.
AC-12250	20"	10.5 MM
AC-12250-1	48"	10.5 MM
AC-12250-2	96"	10.5 MM

CLUTCH HANDLE ASSY



NI #

SPECIFICATION

AC-12017A FIT WINCH 3500LBS
AC-12107A FIT WINCH 4500LBS

CABLE ROPE



AC-12040 / AC-12040-1
AC-12109



AC-12046 / 47

NI#	DESC.	SPEC.	NOTE
AC-12040	WINCH ROPE	LENGTH: 10M, MATERIAL: SYNTHETIC, FINISH: BLUE	MAX PULLING 4,600LBS
AC-12040-1	WINCH ROPE	LENGTH: 15.3M, MATERIAL: SYNTHETIC, FINISH: BLUE	MAX PULLING 4,600LBS
AC-12109	WINCH ROPE	LENGTH: 15.5M, MATERIAL: SYNTHETIC, FINISH: BLUE	MAX PULLING 5,000LBS
AC-12046	WINCH WIRE ROPE	OD 4.8MM, LENGTH 15.2M, MATERIAL: STEEL	FOR 2500LBS & 3000LBS & 3500LBS WINCH
AC-12047	WINCH WIRE ROPE	OD 5.5MM, LENGTH 15.2M, MATERIAL: STEEL	FOR 4500LBS WINCH



AC-12001B
FAIRLEAD ROLLER
BLACK BODY,
W/ SILVER ROLLERS
(O.D. 21MM X 3PCS, 23MM X 1PC).



AT-12378 (1PC)

DESC.:WINCH BUMPER .
W/ ZINC PLATED.



AT-12378-1 (PACK:10PC)

STEEL I.D. 17MM/ O.D. 38MM .
MODEL:UNIVERSAL .



AT-12453
WIRE STOPPER

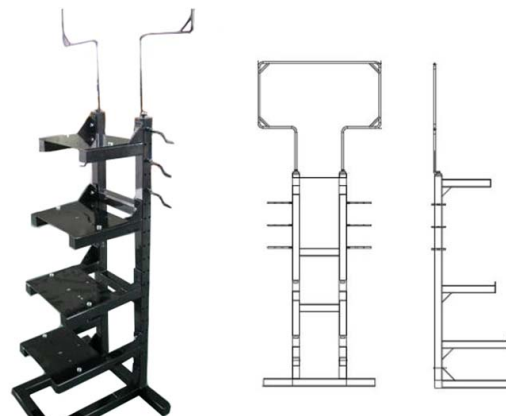
WINCH ACCESSORY KIT



AT-12075-1
INCL.SNATCH BLOCK, 1/2: SHACKLE
1' X 8' RECOVERY STRAP
PACKED IN A PE BAG W/ BRONCO LOGO

WINCH DISPLAY STAND

UC-12011



NI#	HEIGHT	WIDTH	DEEP	NOTES
UC-12011	1675MM	660MM	445MM	W/AD.WINDOW

※ AD. WINDOW DIMENSION : 665(L) X 348(H) MM, W/ 6 HOOKS

WINCH COVER

AC-12044
SPEC.: FOR 2,500/3,000
/3,500 LBS ATV WINCH
MATERIAL: POLYEASTER 300D
FINISH: BLACK
APPLICATION: UNIVERSAL

