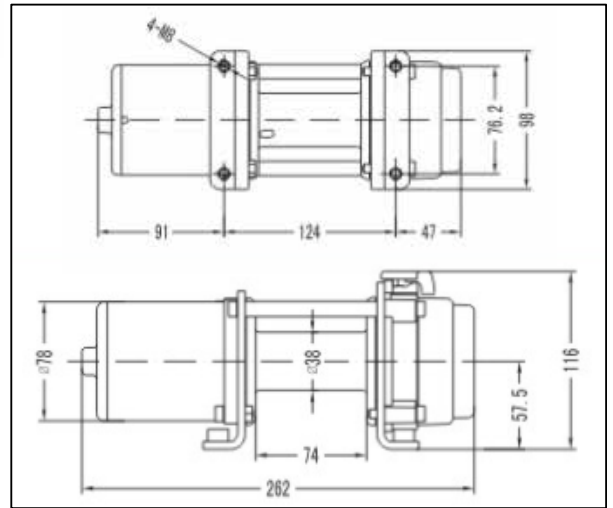




ALL WINCHES INCLUDE A UNIVERSAL MOUNTING BRACKET, HARDWARE, HANDLEBAR SWITCH, AND ELECTRICAL CONNECTIONS AS FEATURED BELOW



AC-12021 SERIES
AC-12022 SERIES



AC-12021
AC-12022
WIRED TYPE



AC-12021-1
AC-12022-1
WIRELESS TYPE

SPECIFICATIONS

RATED LINE PULL	1,500 LBS. (680KGS.) SINGLE-LINE
MOTOR	1.0HP
DIMENSIONS (L X W X H)	262 X 96 X 116 MM
GEARING	DIFFERENTIAL PLANETARY
ROPE (in X ft) (mm X m)	AC-12021 SERIES: STEEL WIRE, 4/25" X 25' (4 MM X 7.6 M) AC-12022 SERIES: SYNTHETIC ROPE, 7/36" X 25' (5 MM X 7.6 M)
GEAR RATIO	153 : 1
NW / GW	14KG/16KG(2PC)
MEAS	34.5 X 24.5 X 35 CM (2PC)

WINCHES

2.500 LBS

AC-12015 SERIES

BRONCO
ATV & UTV COMPONENTS

GENERATION I WINCH

GENERATION II WINCH



AC-12018 SERIES



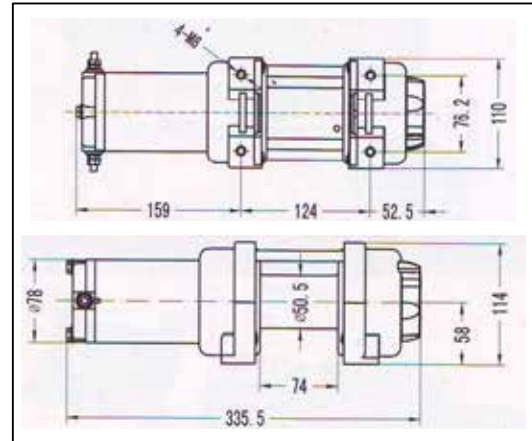
ALL WINCHES INCLUDE A UNIVERSAL MOUNTING BRACKET, HARDWARE, HANDLEBAR SWITCH, AND ELECTRICAL CONNECTIONS AS FEATURED BELOW



AC-12015
AC-12015-1
WIRED TYPE



AC-12018
AC-12018-1
WIRELESS TYPE



SPECIFICATIONS

RATED LINE PULL	2,500 LBS. (1,134KGS.) SINGLE-LINE
MOTOR	FULLY SEALED 12V DC, 0.9HP (700W) PERMANENT MAGNET
CONTROLS	HANDLEBAR MOUNTED MINI-ROCKER SWITCH
GEARING	3-STAGE PLANETARY
CLUTCH	FREESPOOLING; CAM ACTIVATED
BRAKE	AUTOMATIC
DRUM DIAMETER/ LENGTH	20" / 2,9"
ROPE (in X ft) (mm X m)	AC-12015 SERIES: STEEL WIRE, 3/16" X 50' (4.8MM X 15.2M) AC-12018 SERIES: SYNTHETIC ROPE, 3/16" X 33' (4.8MM X 10M)
FAIRLEAD	HEAVY DUTY 4-WAY ROLLER
GEAR RATIO	136 : 1
HOOK	HEAVY DUTY, CLEVIS PINNED LATCH

PERFORMANCE DATA

LAYER	RATED LINE PULL LBS (KGS)	TOTAL ROPE ON DRUM FT (M)	LINE PULL LBS (KGS)	LINE SPEED	MOTOR (DRAW)
1	2,500 (1,134)	8.85 (2.7)	0	27ft (8.3m)	15 AMPS
2	2,134 (968)	19.22 (5.86)	1,000 (454)	20ft (6.1m)	60 AMPS
3	1,861 (844)	31.11 (9.48)	1,500 (680)	14ft (4.3m)	100 AMPS
4	1,650 (748)	44.52 (13.58)	2,000 (907)	10ft (3m)	130 AMPS
5	1,483 (673)	50.00 (15.2)	2,500 (1134)	7ft (2.1m)	160 AMPS

WINCHES 3.000 LBS



AC-12016 SERIES



AC-12019 SERIES



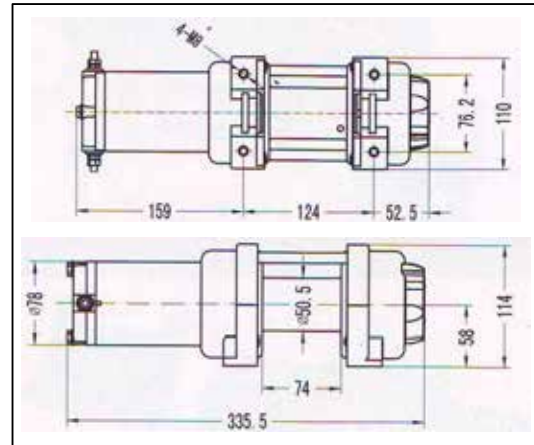
ALL WINCHES INCLUDE A UNIVERSAL MOUNTING BRACKET, HARDWARE, HANDLEBAR SWITCH, AND ELECTRICAL CONNECTIONS AS FEATURED BELOW



AC-12016
AC-12019
WIRED TYPE



AC-12016-1
AC-12019-1
WIRELESS TYPE



SPECIFICATIONS

RATED LINE PULL	3,000 LBS. (1,360KGS.) SINGLE-LINE
MOTOR	12V DC, 1.0HP (770W) PERMANENT MAGNET
CONTROLS	HANDLEBAR MOUNTED MINI-ROCKER SWITCH
GEARING	3-STAGE PLANETARY
CLUTCH (FREESPOOLING)	CAM ACTIVATED
BRAKE	MECHANICAL BRAKE
DRUM DIAMETER/ LENGTH	20" /2.9"
ROPE (in X ft) (mm X m)	AC-12016 SERIES: STEEL WIRE, 3/16" X 50' (4.8MM X 15.2M) AC-12019 SERIES: SYNTHETIC ROPE, 3/14" X 33' (5.5MM X 10M)
FAIRLEAD	ROLLER
GEAR RATIO	136 : 1
RECOMMENDED BATTERY	12 AMP/HOUR MINIMUM FOR WINCHING

PERFORMANCE DATA

LAYER	RATED LINE PULL LBS (KGS)	TOTAL ROPE ON DRUM FT (M)	LINE PULL LBS (KGS)	LINE SPEED	MOTOR (DRAW)
1	3,000 (1361)	8.85 (2.7)	0	27ft (8.3m)	15 AMPS
2	2,561 (1162)	19.22 (5.86)	500 (227)	20ft (6.1m)	40 AMPS
3	2,234 (1013)	31.11 (9.48)	1,000 (454)	14ft (4.3m)	60 AMPS
4	1,981 (899)	44.52 (13.58)	2,000 (907)	9ft (2.7m)	130 AMPS
5	1,779 (807)	50.00 (15.2)	3,000 (1361)	5ft (1.5m)	190 AMPS

WINCHES

3.500 LBS

BRONCO
ATV & UTV COMPONENTS

GENERATION I WINCH

GENERATION II WINCH

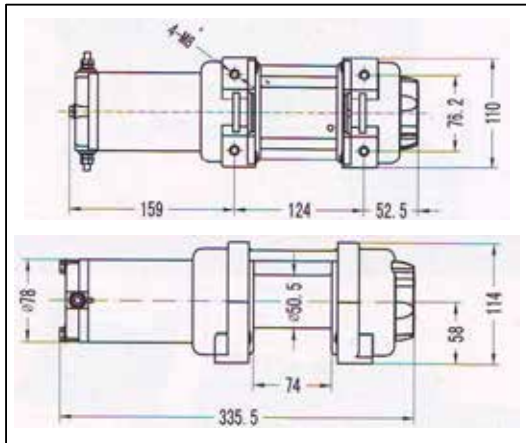
AC-12017 SERIES



AC-12020 SERIES



ALL WINCHES INCLUDE A UNIVERSAL MOUNTING BRACKET, HARDWARE, HANDLEBAR SWITCH, AND ELECTRICAL CONNECTIONS AS FEATURED BELOW



SPECIFICATIONS

RATED LINE PULL	3,500 LBS. (1,581KGS.) SINGLE-LINE
MOTOR	12V DC, 1.1HP (825W) PERMANENT MAGNET
CONTROLS	HANDLEBAR MOUNTED MINI-ROCKER SWITCH
GEARING	3-STAGE PLANETARY
CLUTCH (FREESPOOLING)	CAM ACTIVATED
BRAKE	DYNAMIC MECHANICAL BRAKE IS AVAILABLE
DRUM DIAMETER/ LENGTH	20" /2,9"
ROPE (in X ft) (mm X m)	AC-12017 SERIES: STEEL WIRE, 3/14" X 50' (5.5MM X 15.2M) AC-12020 SERIES: SYNTHETIC ROPE, 3/14" X 33' (5.5MM X 10M)
FAIRLEAD	ROLLER
GEAR RATIO	136 : 1
RECOMMENDED BATTERY	12 AMP/HOUR MINIMUM FOR WINCHING

PERFORMANCE DATA

LAYER	RATED LINE PULL LBS (KGS)	TOTAL ROPE ON DRUM FT (M)	LINE PULL LBS (KGS)	LINE SPEED	MOTOR (DRAW)
1	3,500 (1,581)	8.85 (2.7)	0	27ft (8.3m)	15 AMPS
2	2,561 (1,162)	19.22 (5.86)	500 (227)	20ft (6.1m)	40 AMPS
3	2,234 (1,013)	31.11 (9.48)	1,000 (454)	16ft (4.9m)	60 AMPS
4	1,981 (899)	44.52 (13.58)	2,500 (1134)	7ft (2.1m)	160 AMPS
5	1,779 (807)	50.00 (15.2)	3,500 (1581)	4.3ft (1.3m)	210 AMPS

WINCHES 4.500 LBS



AC-12107 SERIES



AC-12108 SERIES



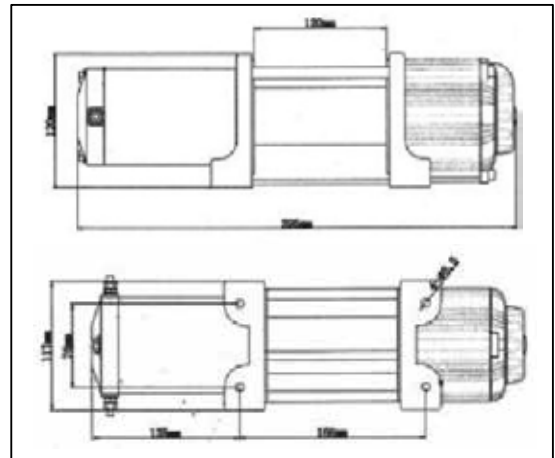
ALL WINCHES INCLUDE A UNIVERSAL MOUNTING BRACKET, HARDWARE, HANDLEBAR SWITCH, AND ELECTRICAL CONNECTIONS AS FEATURED BELOW



AC-12107
AC-12108
WIRED TYPE



AC-12107-1
AC-12108-1
WIRELESS TYPE



SPECIFICATIONS

RATED LINE PULL	4,500 LBS. (2,045KGS.) SINGLE-LINE
MOTOR	12V DC, 1.3HP PERMANENT MAGNET
BRAKE	MECHANICAL BRAKE
DRUM LENGTH	120MM
ROPE (in X ft) (mm X m)	AC-12107 SERIES: STEEL WIRE, 3/14" X 50' (5.5MM X 15.2M) AC-12108 SERIES: SYNTHETIC ROPE, 3/14" X 33' (5.5MM X 15.5M)
FAIRLEAD	ROLLER
GEAR RATIO	166 : 1
OVERALL DIMENSIONS (L X W X H)	395X117X120MM

PERFORMANCE DATA

LAYER	RATED LINE PULL LBS (KGS)	TOTAL ROPE ON DRUM FT (M)	LINE PULL LBS (KGS)	LINE SPEED	MOTOR (DRAW)
1	4,500 (2,041)	7.22 (2.2)	0(N/A)	24.11ft (7.35m)	26 AMPS
2	3,700 (1,678)	16.08 (4.9)	1,125 (511)	14.27ft (4.35m)	109 AMPS
3	3,200 (1,451)	26.57 (8.1)	2,250 (1,022)	9.31ft (2.84m)	155 AMPS
4	2,800 (1,270)	39.37 (12)	3,375 (1,534)	6.88ft (2.1m)	196 AMPS
5	2,540 (1,152)	50.0 (15.2)	4,500 (2,045)	5.41ft (1.65m)	238 AMPS

BRONCO
ATV & UTV COMPONENTS

NEW ITEMS IN BLUE
UPDATED APPLICATIONS IN RED

WINCHES
3.500 LBS

BRONCO
ATV COMPONENTS

AC-12025

DESC.: WINCH 3500LBS - WIRELESS, BLACK EDITION
SPEC.: 1 WATERPROOF, END CAP ALU.
BLACK ANODIZED,
NEW REMOTE, BLACK.
W/WINCH BUMPER.
WIRELESS TYPE,
W/ HOOK BLACK ANODIZED,
STRONGER SYNTHETIC
GRAY ROPE O.D 5.5MM,
LENGTH 10.3M,
MATERIAL: STEEL
FINISH: BLACK COATING



**BLACK
EDITION**

WINCHES PARTS



AC-12025A
BLACK FAIRLEAD ROLLER
FOR AC-12025. WIRE TYPE
MATERIAL: STEEL



AC-12025B
WIRELESS REMOTE SWITCH
W/ BATTERY X 1PC,
REMOTE CONTROL X 1PC,
SOLENOID X 1PC.
WIRELESS TYPE FOR AC-12025.
MATERIAL : PLASTIC